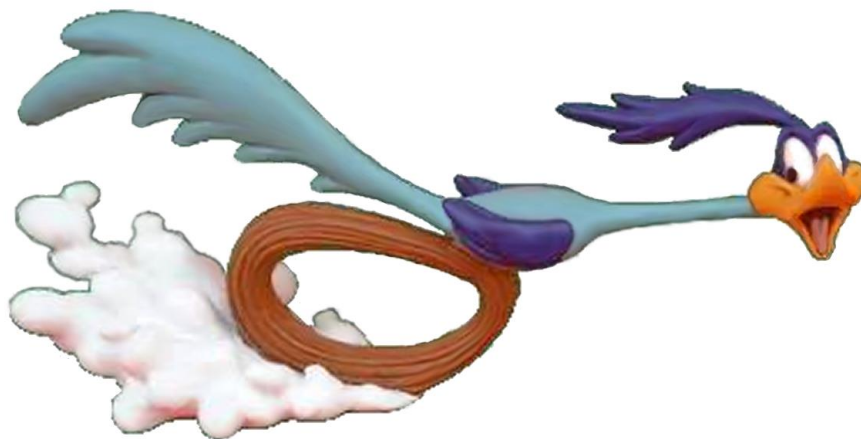




G2 Roadrunners

August 2015 Newsletter

**GWRRRA Region "H" Texas District
Chapter G2 Greenville, TX
Established October 2001**



CHAPTER STAFF

Chapter Directors
Dan & Donna Rymarz
dan@rymarz.com

Chapter Educator
Harry Whipple
skcmss@yahoo.com

Chapter Treasurer
George Augustas
gsaugustas@att.net

Chapter Newsletter
Ron Wilson
zzbear52@hotmail.com

Chapter Ride Coordinators
Tommie & Judy Elliott
tdejle@yahoo.com

Chapter Website
Dan Rymarz
dan@rymarz.com

Chapter Photographer
Donna Rymarz
donna@rymarz.com

Save the Dates:

Wing Ding
September 3-6, 2015
Huntsville, AL

Kansas District Rally
September 17-19, 2015
Abilene, KS

Chapter "RRrrrrrr" Rally
October 3rd, 2015
Krum, TX

T-Fest Chapter "T" Rally
October 10th, 2015
Harker Heights, TX

Oklahoma District Rally
October 15-17, 2015
Hulbert, OK

Chapter "H" Rally
October 17th, 2015
San Antonio, TX

Chapter G2 Gatherings:

On the first Tuesday every month, G2 meets at the Cotton Patch Café in Greenville. (3128 I-30, Greenville, TX 75402) - (903) 454-2271. This has been the main meeting historically.

On the Third Tuesday every month G2 meets at Napoli's Restaurant in Wylie. (701 N Hwy 78, Wylie, TX 75098) - (972) 442-4653. This is a new satellite location started in May created to help GWRRA members who are unable to make the Greenville or McKinney/

On the Fourth Thursday every month, G2 meets in San Miguel's in McKinney Texas. (506 W University Dr McKinney, TX 75069) – (972) 548-2345. This is the location and day of the original Z2 Chapter gathering. It was agreed that this meeting would continue to happen as a way to help GWRRA members who are unable to make the Greenville or Wylie gatherings.

In general this three location idea is what is being used in other states where geographically GWRRA Members are dispersed and small in numbers. Our Chapter usually meets multiple times for dinner anyway; this just allows more people the opportunity to participate.



From Your Chapter Director,

It is now August; the heat of this summer has not been as bad as in past summers but has been consistently in the high 90's. And while this has transformed those long Saturday rides into shorter, earlier breakfast rides, it has done little to dampen the participation we have seen! I cannot tell you how happy I have been to see so many riders, even when I know it can be uncomfortably warm. Participation is what makes this all fun and our Chapter "G2" has been growing slowly and steadily.

Also growing, is the number of people taking advantage of the multi-location strategy of "G2" chapter meetings. While the Greenville meeting is still our largest gathering, the Wylie meeting has been growing to challenge its dominance. As old Chapter "B" folks discover they have a convenient place to go, and word spreads, we hope that translates into more friends to ride with in the long run. While the McKinney gathering is relatively smaller, I want to continue it to serve the wide open northwestern countryside, where many GWRRA members live but no standalone chapter exists.

All these meeting locations raises some to ask what the ultimate goal is for "G2", What expectations do we have, and where do we see ourselves in the years to come. It is not expected that everyone attend each and every meeting. We all have a life outside riding and outside the chapter and the variety is geared more for having opportunity not quantity. The hosting of the multitude of locations is not any great hardship for Donna and I and we have folks at each location that we enjoy breaking bread with. So we will continue this pattern as long as folks show up. Perhaps in time this will grow to a point where creation of separate chapters may one day be warranted.

Another trend we have been seeing and embracing is diversity. As a brand, Honda is not the only show in town as we all know, and Goldwings represent a smaller number of the bikes out there. So it behooves us to think a little differently these days. Is the type of bike we ride more important that the way we like to ride? I would argue that the thing I like most about riding is the comradery of riding and the support we all give one another. "G2" rides are the model of this new reality, with manufacturers becoming more diverse and more inclusive. We have participation from Harleys, Honda's, Can-Ams, and expect to see more and more styles as we go along. What we have in common is the desire to ride safely, maturely, and consistently. The more the merrier!

I would like to share with you all the diversity of destinations and activities "G2" has been offering and what we hope to offer in the future. While during the summer we have shorter earlier rides, as we move into fall the plan is to find interesting destinations that take us out further, and to places new and interesting. We would like to have more overnights and weekend trips (trust me, I am not talking about dominating our schedules with those). Rallies are also in the plans as are the Charity rides, and for the most adventurous and crazy ones, Donna and I are planning on an Iron Butt ride or two per year. Simply put, we want to have something to offer every riding style and capability, and in some cases this might mean competing events on a given Saturday if we grow to have enough rides to do so.

Lastly is the discussion of Membership in GWRRA and my personal thoughts on the matter. Some chapters and some organizations will push folks to join, pay dues, and have a certain participation rate in order to be considered members. I do not subscribe to this. We do hold raffles, host events, and even will be hosting a spring Bowling tournament. I have seen non GWRRA members be part of these fund raising efforts and that is good enough for me. I am not willing to give up on someone if we do not see them for a while, as we are all busy from time to time. When we see these folks it will just be a reunion and a reason to celebrate! I would like folks though to consider GWRRA Membership as it offers many things including supporting the chapters and offering rider education.

I encourage you to invite others to our group and spread the word that "G2" is here and wanting to have fun!

Dan Rymarz
TX-G2 Chapter Director



From Your Chapter Educator

Greetings Road Runners,

As all of you know the last month has been good riding weather even though it has been quite hot. All you have to remember when riding in the heat is to drink plenty of water and take more than normal breaks to rest. There is plenty of gear you can buy to keep you cool when riding but there is no replacement for keeping your body well hydrated.

I have learned both the white lining and lane splitting law and the dead red law that had been proposed for this state died in committee. So guess we wait and see what next year brings and if they are brought up again.

On May 22 the governor signed SB449 which created a new definition for an autocycle in Texas. The bill became effective immediately. Definition of an auto cycle is:

1. Designed to have when propelled not more than 3 wheels on the ground.
2. Equipped with a steering wheel.
3. Equipped with seating that does not require the operator to straddle or sit astride the seat.
4. Manufactured and certified to comply with federal safety requirements for a motor cycle.

SB449 amends TRC chapter 521 where an autocycle can be operated on a class C license. This is because an autocycle is stable, has a steering wheel, and uses a traditional throttle and brakes like a motor vehicle does.

For purposes of titling, registration, and inspection an auto cycle will be considered a motorcycle. This is because an autocycle cannot meet the definition of a motor vehicle required by federal statutes (airbag crash ratings, enclosed, etc.).

Riders of an autocycle as amended by SB448 require operators to wear a helmet. The standard exemption from the helmet requirement of having sufficient insurance also applies to an auto cycle. There is a safety restraint system on auto cycles but state law does not require riders to put on. Riders should comply with manufactures suggestions for safe operation. SB449 exempts the autocycle from the footrest and handhold requirement.

SB449 amends section TRC 545.416 to state that passengers may only ride in the seat of an autocycle and an operator may not carry another person in an autocycle unless the person is at least 5 years old.

Finally autocycle must be operated in the same manner as a regular motor vehicle for the purposes of TRC subtitle C rules of the road.

This is the vehicle that had the law come about. Safe Riding.

Harry Whipple
TX-G2 Chapter Educator





From Your Regional Directors

Region Director. They will continue to serve as our Region MEC's as well and as we all know, they have been doing a "bang up" job there. When you see them at Wing Ding, give them a back slap, a hand shake and a good old thank you!

Speaking of Wing Ding; it's coming up in 40 days from this newsletter publish date. Wow! Do you have your ride planned and your reservations made? I hope so. This will be the busiest Wing Ding Reba and I have ever attended. Being new at the Region Director thing and being involved in couple selection has our plate full. Please help us out by signing up as a volunteer for the bike show on our webpage at www.gwrra-h.org.

One of the things you are going to hear at the couple selection is, "You are all winners but only one couple can be selected as International Couple of the Year. There are no losers!" That sort of sounds like something to ease the non-selected participants' minds, but let me tell you how true this really is.

When you are Chapter Couple you get to help out your Chapter Team. Yes, you get to sell tickets, but can you think of another way you can so easily interact with all the chapter members more efficiently? Then you move up to the District selection. You don't have to, but you're really missing out if you don't. The couples who were in this process became great friends of ours. We visit and ride together frequently. Not only did we become friends with them, but

friends with their friends! Most of these have moved on to leadership positions at various levels within the organization. Same thing occurred at the Region level. Now that we are in the International Selection, we have met 3 of the other 8 couples. We can honestly say we have enjoyed our time spent with these new friends and look forward to meeting the others.

I am sure we all enjoy our chapter friends. We love to ride, fellowship and dine with them. Why do we want to restrict our playing field? We now have riding, fellowshiping and dining friends all over the United States and hopefully soon to be Canada!

GET INVOLVED! PARTICIPATE, PARTICIPATE, PARTICIPATE!

Oh, and BTW, when you are sitting out in the concert hall, squirming in your seat while the 9 couples go through their drills on stage, know that the couples backstage are having a great time. They maybe even playing FARKLE!

Kansas and Oklahoma Rallies are just over the horizon! Info is available at the end of this newsletter.

Jim and Reba Berry
Region "H" Director





From Your District Director

We have been having a great time delivering awards to different Chapters this year after our rally. The ones off the top of our heads were several “Officers Certification Program” (OCP) completion certificates and pins. Chapter C had six that complete the Program and we delivered 4 to Chapter X2.

We also delivered a very special award to Jim and Alvalin Woodul from Chapter T in Killeen for being awarded the “Senior Chapter Director”. They will wear their patches proudly.

Let’s not forget to visit and join in the fun when our Texas Chapters put on a weekend rally for everyone to enjoy. See the flyers that are attached in the newsletter for Chapter’s T’s T-Fest on October 10th in Harker Heights and Chapter H’s Wings in the Park” on October 17th at Raymond Russell Park in San Antonio. We are looking forward to other Chapters to join in on the fun. We have already participated in Chapter J’s, M2’s and I’s Rally’s. It is a lot of fun to get out and visit and have fun with our friends. We would like to see a lot more of Texas come out and play with us. Don’t forget a Chapter that plays together, stays together.

Wing Ding is less than a month away. We have finalized our plans for our trip. We will be riding through Deals Gap and visiting Ruby Falls, taking a dinner cruise on the Southern Belle Riverboat and visiting the 1909 Terminal Station, better known as the world famous Chattanooga Choo Choo Hotel. The 24 acre complex boast two hotel buildings, on site dining, retail shops, tranquility Rose Gardens, you can even be a guest overnight in a beautifully restored authentic sleeper car.

We will be arriving on Tuesday so we can support Jim and Reba Berry in the International Couple of the Year Selection process at 1:30, don’t forget to wear your safety green/yellow shirts so they can look out into the audience and see all of us out there showing our support.

There are still spaces available to help out with the Bike Show. Region H is heading up the bike show and we always come through to get the job done. Just go to the Region H website and click on Wing Ding Bike Show Signup and it will take to an area to place your name in the area you would like to help.

There will be a volunteers meeting on Thursday to go over the event. The bike show itself is on Friday September 4th .

We are looking forward to seeing everyone there, we are ready to ride.

Mike & Robin Thacker
District Directors





GWRRA Vision

Gold Wing Road Riders Association [GWRRA], founded in 1977, is recognized as the world's largest single-marquee motorcycle association in the world. GWRRA provides safety, technical, and educational services to its Members world-wide.

GWRRA Mission

Dedicated to our Motto; Friends for Fun, Safety and Knowledge, GWRRA Members enjoy the freedom of belonging to a not-for-profit, non-religious and non-political organization.

GWRRA Values

Friends - GWRRA Members are men and women from all walks of life with varied interests and backgrounds. We have Gold Wing and other touring motorcycle riders of all age groups. Some ride solo and many ride with small and large groups! New Members join GWRRA especially for the technical information we share; some of our Members join for the enjoyment of riding with friends and also meeting new friends. Find your future riding friends with your [Region Map](#).

Fun - As a family organization, GWRRA has certain fun groups to include restaurant, picnic and campout runs. We also have GWRRA groups to include charities, parades, and small or large events across the country. GWRRA Members can participate in live or video seminars through [Rider Education Programs](#).

Safety - We strive for improvement through GWRRA safety workshops. We will share technical expertise, news and tips about riding, maintenance and the best touring routes in the world. [Safety is for Life](#) on our GWRRA Rider Education Programs page.

Knowledge - While generalization about a group of individuals as large as today's GWRRA is difficult, GWRRA Members are likely to be independent thinkers, fun-loving, generous, adventuresome, cooperative and unfazed by the natural challenges of riding in the rain, temperature extremes or highway uncertainties. Many Members have Find " CPR and First Aid Training " on our GWRRA Medic First Aid International® Programs.

Why belong to GWRRA?

There are many benefits to becoming a GWRRA Member. As a Member you will enjoy camaraderie and fellowship while enjoying the comfort of belonging to the largest family of Gold Wing/F6B and other touring motorcycle owners. We like to share our pleasure in the freedom of riding motorcycles with others like ourselves. Our Members strive for improvement by attending GWRRA live, video and webinar safety workshops. We offer an emergency towing and roadside assistance program called Rescue Plus. This is a benefit that ensures peace of mind, day or night. Among our 60,000 + skilled and dedicated Members can find the answer to almost any question regarding the Gold Wing! Your special Membership Card signifies your membership, along with many other benefits such as; discounts at touring motorcycle dealerships, designated hotels, campgrounds and travel agencies. As a Member, whenever you need help traveling, our Gold Book Directory connects you with your nearest friends, worldwide. Our most important benefit is sharing how to safely enjoy motorcycling in more ways than you thought possible. Belong to GWRRA!

[Become a member!](#)

GWRRRA INFO

GWRRRA Home Office
21423 North 11th Avenue
Phoenix, Arizona 85027
Phone: 800-843-9460 or 623-581-2500 (Phoenix)
Fax: 877-348-9416
Email: memberservices@gwrrra.org

RESCUE PLUS INFORMATION

Discounted, low-cost roadside assistance for you and your family for as little as \$35 per year*, provided by Nation Safe Drivers. Rescue Plus is our best value solution. Learn how much Rescue Plus can save you by comparing it to AAA PLUS.

Rescue Plus covers all registered family members within the household while driving any non-commercial vehicle or motorcycle, with 100 miles of free towing. Standard Rescue covers motorcycles only. This plan also covers GWRRRA Members' motorcycle trailers. (Note: Members of GWRRRA must have a Family Membership to cover multiple drivers.)

NATION SAFE DRIVERS (NSD) INFO

Program Administrator
1108 E. Newport Center Drive
Deerfield Beach, FL 33442
Important Numbers
24hr Dispatch: 888-233-9172
24hr Dispatch (Canada): 866-742-0939
Map Service: 800-338-2680

ADDITIONAL RESCUE PLUS BENEFITS & INFORMATION

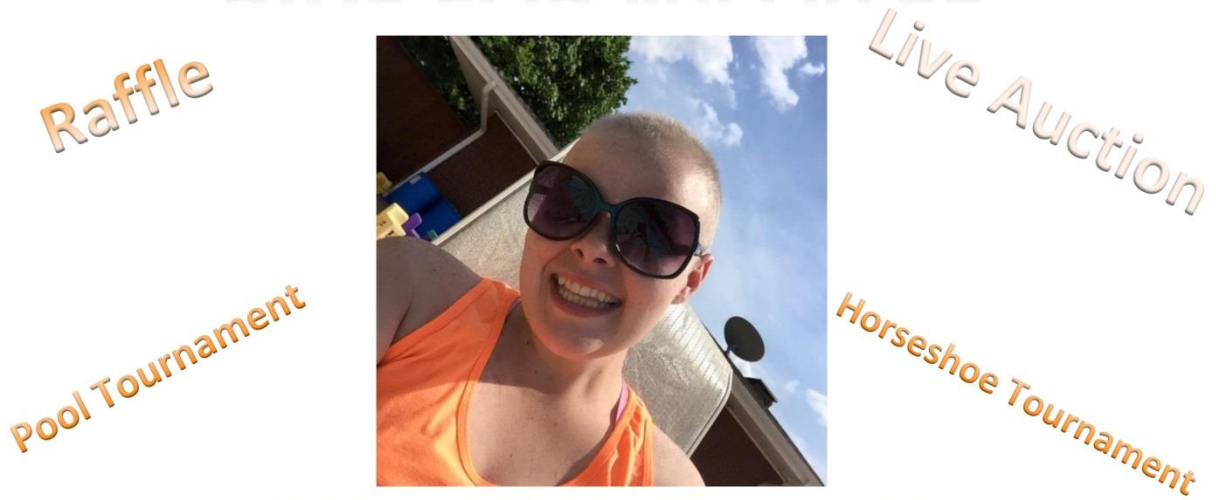
Map Service - Car map. Membership allows specially prepared maps for travel. Call 800-338-2680 two weeks in advance of your trip, giving your trip origin and destination.

Rental Car Discounts - Rental car keys. Call any of these nationwide rental car companies providing assigned identification number and receive a discount.

Alamo 800-354-2322 (ID# 93625); AVIS 800-831-8000 (ID# A619901); Budget 800-772-3773 (ID# 8700013620); Dollar 800-800-4000 (ID# NS6009); National 800-Car-Rent (ID# 5140401); Thrifty 800-367-2277 (ID# 0010027892).

Hotel Discounts - Hotel counter button. Member will receive 10% Traveler's Discount at participating Choice Hotels, including Comfort, Quality, Clarion, Sleep, Econo Lodge, Rodeway and Friendship hotels. Call 800-4 CHOICE to make advance reservations. Ask for the Nation Safe Drivers Traveler's Discount. This discount is based on availability at participating hotels and is not for use in conjunction with any other discount offer or promotional rate. Advance reservations required.

RIDE FOR NATALEE



Quote From Natalee: " Dear Cancer, I hate your stinking guts."

When: August 29, 2015

Time: 9:00 A.M.

Where: The ride will start in Justin, TX at Pit Stop Barber shop and end at The Coyote Club in Denison, TX

\$25 entry fee, comes with a free t-shirt for the first 100

CALL BRIDGETTE HIGHTOWER IF ANY QUESTIONS
940-205-9679

ROUTE OF RIDE ON BACK

Ride For Natalee

Saturday, August 29 2015

\$25.00

Ride Registration Form/ Liability Release

Name: _____ **Phone:** _____

Address: _____

Email Address: _____

Passenger Name: _____

BY SIGNING BELOW I, (AND ANY SAID PASSENGERS), AGREE TO RELEASE: NATALEE HIGHTOWER, HER FAMILY, HER FRIENDS, THE PIT STOP BARBER SHOP, THE COYOTE CLUB, THEIR ASSOCIATES, THEIR EVENT ORGANIZERS, THEIR VOLUNTEERS, AND ANYONE ELSE AFFILIATED OF ANY KNOWN OR UNKNOWN: DAMAGES, INJURIES, LOSSES, JUDGEMENTS, AND/OR CLAIMS FROM ANY CAUSE WHATSOEVER. ANY LEWD OR OBNOXIOUS BEHAVIOR IS PROHIBITED AND WILL RESULT IN HAVING TO LEAVE THE PREMISES. ONCE REGISTERED NO REFUNDS WILL BE GRANTED (UNLESS THE EVENT IS CANCELED). IT IS ALSO AGREED , BY SIGNING BELOW, THAT THE VEHICLE YOU HAVE REGISTERED CARRIES AT LEAST THE STATE MINIMUM INSURANCE, AND THAT IT IS THE SOLE RESPONSIBILITY OF THE OWNER FOR ANY DAMAGE MADE TO ANY PROPERTY AND/OR PERSONS THAT IS CAUSED BY REGISTERED OWNER.

SIGNATURE OF PARTICIPANTS (GUARDIAN IF UNDER 18)

CONTACT: BRIDGETTE HIGHTOWER @ 940-205-9679



WINGDING37

HUNTSVILLE, ALABAMA + SEPTEMBER 3-6, 2015 + wing-ding.org

REGISTER TODAY! SIMPLY MAIL OR FAX YOUR COMPLETED FORM

Contact Member Services at 800-843-9460 with any questions. Visit wing-ding.org and click "REGISTRATION" at the top of page.

RIDER'S NAME: _____ GWRRA MEMBER # _____

CO-RIDER'S NAME: _____ GWRRA MEMBER # _____

MAILING ADDRESS: _____

CITY/ST/ZIP: _____ COUNTRY: _____

E-MAIL ADDRESS: _____

HOME PHONE: _____ ALT. PHONE: _____

PREREGISTRATION:

(Postmarked before July 16, 2015)

Number of Life Members _____ x \$20 = \$ _____

Number of Members _____ x \$40 = \$ _____

Number of Non-Members _____ x \$50 = \$ _____

LATE REGISTRATION:

(Postmarked July 17, 2015 - August 6, 2015)

Number of Life Members _____ x \$22 = \$ _____

Number of Members _____ x \$45 = \$ _____

Number of Non-Members _____ x \$55 = \$ _____

DAY PASS:

(Sold on-site only)

\$22 per person
\$15 GWRRA Members

Day Pass Fee includes the following:

- One-day pass to indoor Trade Show
- One-day access to Demo Rides on all participating manufacturers' bikes (subject to availability)



FULL REGISTRATION INCLUDES:

- 4-day pass to indoor Trade Show
- 4-day pass to Demo Rides on all participating manufacturers' bikes (subject to availability)
- Wing Ding Welcome Party
- Access to Seminars and Parades
- Access to Opening and Closing Ceremonies
- Optional dinner and priority seating prior to free Entertainment Event
- Access to free Evening Entertainment Event
- Souvenir Event Pin and Pocket Guide
- Exclusive opportunities for tours, dinners and other ticketed events
- Numbered armband for chance at thousands of dollars in amazing prizes!
- Precision Drill Team Exhibitions and other performances
- Optional Rider Education Safety Courses, CPR Classes and more

Children 15 and under at the time of the event are admitted free. Cancellations in writing must be received at the Home Office on or before August 6, 2015, and are subject to a \$15 processing fee. No telephone or verbal cancellations will be accepted.

Please note, only registered delegates may participate in Wing Ding functions, activities and events! You will receive a confirmation via email 24-48 hours after your registration is processed. Please visit our website for hotel and camping information. Armbands,

tickets, T-shirts or any other items purchased will be available for pickup beginning the day prior to Wing Ding in the registration area (see website for hours and location). In accordance with federal regulations, some prizes may be subject to up to 25% federal withholdings payable prior to receipt.

FAX or MAIL this form to: GWRRA Member Services, P.O. Box 42450, Phoenix, AZ 85080-2450. Fax: 877.348.9416. Call 800.843.9460 or 623.581.2500 for more information. Register on-line at: wing-ding.org

Text WINGDING to 555-888 for all the latest news, updates, and special offers! LIKE us on





WINGDING 37

HUNTSVILLE, ALABAMA + SEPTEMBER 3-6, 2015 + wing-ding.org

RIDER EDUCATION COURSES

The number and availability of courses is dependent upon the number of participants. You will be notified of your class time and location as soon as possible. Note: Certification cost is per bike! \$20 refund after course completion.

ARC:

Experience advanced techniques in turning, maximum braking, and swerving plus mental and situational strategies in GWRRA's own Advanced Rider Course. Co-Riders welcome. 8 hours (classroom and range)

OF PEOPLE _____ \$50 per bike = _____
 Rider _____
 Co-Rider _____

ARC (Recertification):

The GWRRA ARC for those who have PREVIOUSLY COMPLETED the ARC. Includes discussions at the beginning of the course and between exercises. 5 hours (range only)

OF PEOPLE _____ \$50 per bike = _____
 Rider _____
 Co-Rider _____

SIDECAR:

Experience advanced techniques of riding with a sidecar as well as situation strategies and accident avoidance tactics. 8 hours (3 classroom/5 range).

OF PEOPLE _____ \$50 per bike = _____
 Rider _____
 Co-Rider _____

TRAILERING:

Learn advanced trailering techniques and strategies for safe and enjoyable travel. Motorcycles only--no trikes or sidecars please. 8 hours (3 classroom/5 range)

OF PEOPLE _____ \$50 per bike = _____
 Rider _____
 Co-Rider _____

TRIKE:

This course teaches advanced riding skills for the trike rider such as maximum braking, swerving and turning. 8 hours (3 classroom/5 range)

OF PEOPLE _____ \$50 per bike = _____
 Rider _____
 Co-Rider _____

TRIKE/TRAILER:

This course combines the Trike Rider Course (TRC) with some guided practice in backing a trailer. 8 hours (3 classroom/5 range)

OF PEOPLE _____ \$50 per bike = _____
 Rider _____
 Co-Rider _____

CPR/FIRST AID (New):

This course is designed to teach and certify you in the basic principles of CPR and First Aid. 8 hours

OF PEOPLE _____ \$50 per person = _____
 Name _____
 Name _____
 Name _____

CPR/FIRST AID (Renewal):

This course is designed to refresh and recertify you in the basic principles of CPR and First Aid. 4 hours

OF PEOPLE _____ \$50 per person = _____
 Name _____
 Name _____
 Name _____

RIDER EDUCATION TOTAL: _____

Please send check or money order in equivalent U.S. funds. All others will be returned to sender for adjustment. Please do not send cash.

GRAND TOTAL: _____
 ENCLOSED: Check Money Order
 CHARGE MY: M/C VISA
 AmEx Discover

Name: _____
 Number: _____
 Exp. _____ Signature: _____

GRAND PRIZE

Your Choice! A New Honda Gold Wing or \$10,000 in Cash!

_____ 5 Tickets = \$15
 _____ 10 Tickets = \$20
 _____ 20 Tickets = \$30
 _____ 40 Tickets = \$50
 Total _____

Must be present to win! Drawings held at Closing Ceremonies*. GWRRA not responsible for filling out tickets or placing them into hopper. Altered, illegible or counterfeit tickets will be voided.

GRAND 50/20-15-10-5

_____ 1 Yard (18 Tickets) = \$10
 _____ 3 Yards (54 Tickets) = \$20
 _____ 7 Yards (126 Tickets) = \$40
 Total _____

4 Winners! Must be present to win! Drawings held at Closing Ceremonies*. GWRRA not responsible for filling out tickets or placing them into hopper. Altered, illegible or counterfeit tickets will be voided.

GWRRA ENTERTAINMENT NIGHT

September 3rd. Rotisserie chicken, Sliced Pit Ham, Home-Style Mashed Potatoes, Gravy, Green Beans, Turnip Greens, Mac and Cheese, Fried Okra, Corn Bread, Tossed Salad, Sweet and Unsweetened Iced Tea. Lemon pie. (Seating is limited, while supplies last)

OF PEOPLE _____ x \$16 = _____

BBQ DINNER

September 5th, prior to free Evening Entertainment Event. Pulled Pork, Smoked Chicken, Coleslaw, Potato Salad, Baked Beans, Corn on the Cob, Rolls, Watermelon, Lemonade and Iced Tea. (Seating is limited, while supplies last)

OF PEOPLE _____ x \$16 = _____

SOUVENIR T-SHIRT

(Place quantity next to size.)

_____ Small x \$15 = _____
 _____ Medium x \$15 = _____
 _____ Large x \$15 = _____
 _____ XL x \$15 = _____
 _____ 2XL x \$17 = _____
 _____ 3XL x \$20 = _____
 _____ 4XL x \$20 = _____

Embroidered Polo Shirt (Moisture wicking performance material)

_____ Size x \$30 = _____
 Total _____

BIKE SHOW COMPETITION

OF BIKES _____ x \$10 = _____

Includes souvenir pin.

POKER RUNS (8 Winners!)

Must be present to win! Includes souvenir pin. 1st (\$500), 2nd (\$250), 3rd (\$100), 4th (\$50), 5th-8th (\$25 each).

Winners will be posted on Closing Day. Five card draw.

OF HANDS _____ x \$10 = _____

Kansas District Convention

'Wingin' It to the Air Capital City
The Hospitality District



The Best Western North Wichita Hotel & Suites
915 E 53rd St North, Wichita, Kansas
1-866-503-5700 or 316-832-9387



Ya'll Come See Us!
Jack & Doris, KS-DD

September 18-19, 2015

Vendors



Grand



Seminars



Prize

Night Light
Parade



Twister's Drawings



Drill
Team



On-Off Bike Games

The Chicken is Back !

and he'll be dropping a pile of winners

Free Rally
T-Shirts with
Preregistration



More Info to
come!



50/25/15/10
&
Spin the Wheel

October 3rd, 2015

Bingo
&
Indoor Games

10:00am to 3:00pm

Odometer
Poker Run

The RRRrrally Cats
are hosting a Motorcycle Rally!

On Bike
Scavenger Hunt



The Spectacular
CHICKEN DROP

Krum Masonic Lodge
230 N. Second Street Krum, TX
Food will be available for purchase

Thanks to our Chapter "R" Supporters!



T-Fest 2015

Motorcycle Rally - Dart Run - Bike & Trike Show

OPEN TO EVERYONE AND ALL TYPES OF MOTORCYCLES ARE WELCOME!

October 10, 2015 - 8:30 A.M. to 2:00 P.M.

Retired E9 Association Building
699 E. Veterans Memorial Boulevard,
Harker Heights, TX



Silent Auction

Lunch Included!

Dart Run - Gift Cards
Enjoy a scenic ride through the Central Texas countryside.
First out 9:00 a.m. - Last in 1:00 p.m.

**People's Choice
Bike & Trike Competition**

ALL PRIZES TO BE AWARDED AT 1:30 P.M. ---- YOU MUST BE PRESENT TO WIN

Major Sponsors



Visit our website at: <http://centexwings.org/> for more info and planned vendors.

Registration fee includes entrance, games, lunch ticket, one contingency prize ticket, and one grand prize ticket per paid person. Registrants also receive two "ballots" each to vote in the competition for their favorite bike and trike.

To Pre-Register Mail Form & Payment To: GWRRA Chapter T 4505 Trimmer Road Killeen, TX 76542 Call 254-634-4658 MAKE CHECKS PAYABLE TO: GWRRA Chapter T	Early Registration by 1 October:	\$15 per person	\$ _____
	On-Site Registration:	\$18 per person	\$ _____
	Additional Grand Prize Tickets:	6 for \$5 or 13 for \$10	\$ _____
	Dart Run Entry Fee:	\$5 per person	\$ _____
	<i>You must be registered and pay Dart Run entry fee to participate in Dart Run prize drawing.</i>		Total Amount:

Rider Name: _____ Co-Rider Name: _____

Address: _____ City, State, Zip: _____

Phone # and/or Email Address (in case we need to contact you regarding your registration): _____

Through my signature below I, for myself and all personal representatives, assigns, heirs, and next of kin, agree to hold harmless the organizers, GWRRA, sponsors, advertisers, their respective administrators, directors, agents, officers, members, volunteers, and employees, other participants, and, if applicable, owners and leasers of premises on which the this event takes place, for any loss or injury to myself or my property by reason of my participation in this event. I also agree to assume responsibility for any damages or injuries I knowingly cause.

Rider Signature _____

Co-Rider Signature _____

Sequoyah Lodge
On beautiful Fort Gibson Lake
19808 Park Road
Hulbert, OK 74441

Hiking / Biking on Nature Trails
Horseback Riding / Hay Rides
Golf / Tennis
Boating / Fishing
On-Site Restaurant
Monster Mash Ball



Halloween on the Lake

2015 Oklahoma District Convention
October 15 - 17, 2015

Lodge Rooms & Cottages
\$80 - \$130
Call: 918-772-2545
Use Group ID: 324951



Camp Sites
\$26
Call: 918-772-2046

<http://www.gwvraokla.org>
www.travelok.com/listings/view.profile/id.13299



GWRRA OKLAHOMA DISTRICT CONVENTION

**Hallo-Wing On the Lake
The Lodge at Sequoyah State Park**

October 15-17, 2015



REGISTRATION FORM

Rider: _____ GWRRA# _____ DOB: _____
 Co-Rider: _____ GWRRA# _____ DOB: _____
 Address: _____ (Date of Birth)
 City: _____ State _____ Zip: _____
 Phone: _____ E-Mail: _____
 Region _____ District _____ Chapter _____ Miles to Convention: _____
 Plan to stay at: Host Hotel Other Hotel Camp Other

DESCRIPTION: <i>All On Site Registrations Will be an Additional \$5.00</i>	QTY	PRICE	TOTAL
GWRRA Life Member (20+ Years)	_____	\$17.50	_____
GWRRA Member	_____	\$25.00	_____
Non GWRRA Member	_____	\$30.00	_____
Meal Tickets (must purchase one per person regardless of age)	_____	\$10.00	_____
<i>(Children under 12 attend rally FREE (Fee for meal NO MEAL TICKETS WILL BE SOLD ON SITE)</i>			
Level IV Breakfast Tickets for Saturday 10/17/15	_____	FREE*	_____
(* Must be current as of Oct 1, 2015) Rider Master # _____ Co-Rider # _____			

TICKET SALES (MUST BE PRESENT TO WIN)

50/50 Tickets Friday 10/16/15 (Per Stretch)	_____	\$10.00	_____
50/50 Tickets Saturday 10/17/15 (Per Stretch)	_____	\$10.00	_____
\$500 Grand Prize Tickets Saturday 10/17/15 (Per Stretch)	_____	\$10.00	_____

OTHER ACTIVITIES {TENTATIVE}

Medic First Aid/CPR (Full Certification) 9am.-3pm. Friday (10/16/15)	_____	\$25.00	_____
Medic First Aid/CPR (Renewal) 9am-3pm Saturday (10/17/15)	_____	\$25.00	_____
Rider Education TBD Friday (10/16/15)	_____	\$35.00	_____
Rider Education TBD Saturday (10/17/15)	_____	\$35.00	_____
Hay Ride and Cowboy Campfire Friday (evening 10/16/15)	_____	\$ 5.00	_____
		GRAND TOTAL	\$ _____

I/WE agree to hold harmless the GWRRA, co-sponsoring organization, and any property owners for any loss or injury to self or property to which I/We may become involved by reason of participation in this convention. I/We also agree to assume responsibility for any property which I/We knowingly damage.

Rider: _____ Date _____
 Co-Rider: _____ Date _____



MAKE CHECKS PAYABLE TO: **OKLAHOMA DISTRICT**
 Mail to Johnie Fredman, 33207 45th St. Shawnee, OK 74804

Must Preregister by October 9th, 2015

Wings in the Park

GWRRA Texas Chapter H



**Alamo City Wings and Alamo Cycle Plex
Raymond Russell Park**

20644 IH-10 West - Exit 552

San Antonio, Texas

Saturday - October 17, 2015



Registration	10am-1pm
Poker Run - Last bike out	11am
Lunch - Burgers & Dogs	Noon-1:30pm
Off-Bike Games	1:30-2:30pm
Closing Ceremonies	3pm



Silent Auction!

Picnic tables available, bring lawn chairs for extra seating in the shade

For more information visit: www.gwr-ra-txh.org

Registration Information and Form

Pre Registration (before October 1st, 2015) \$15 per person

Includes One Meal Ticket, Poker Run, 1 Door Prize Ticket, and one 50-30-20 Ticket

On-site Registration \$20 per person

Includes One Meal Ticket (if available), Poker Run, 1 Door Prize Ticket, and one 50-30-20 Ticket

Make check payable to: "GWRRA TX-H" and mail to:

Charles Fleming, 6702 Connie Mack Dr., San Antonio, TX 78240

Rider: _____ GWRRA #: _____ Exp: _____

Co-Rider: _____ GWRRA #: _____ Exp: _____

Additional Participants: _____

Address: _____

City: _____ State: _____ Zip: _____ Email _____

Phone: (____) _____ Chapter: _____

The undersigned agrees to comply with the rules covering this event and to hold harmless GWRRA, Raymond Russell Park and GWRRA Chapter H sponsoring this event, for loss or injury to myself or to my property as a result of participation in this event. The undersigned have read and understood this statement.

Rider Signature: _____ Date _____

Co-Rider Signature: _____ Date _____

The Region "H" Team

Region Director

Jim & Reba Berry
Jim 318-348-1275
Reba 972-854-2752
director@gwrra-h.org

Assistant Region Director

Steve & Billie Fleming
Steve 832-630-2038
Billie 832-630-2293
adirector@gwrra-h.org

Region Educator

Karen & Ricky Frazier
Karen 281-615-1365
Ricky 281-615-4386
karenf@nctv.com

Region Motorist Awareness

Mike & Becky Stevenson
Mike 504-782-1475
Becky 504-782-1474
mad@gwrra-h.org

Region Medic First Aid

Ricky & Karen Frazier
Ricky 281-615-4386
Karen 281-615-1365
karenf@nctv.com

Region Trainer

Jack Wagner
405-514-1234
trainer@gwrra-h.org

Region MEC

Region COY Coordinator
Steve & Billie Fleming
Steve 832-630-2038
Billie 832-630-2293
med@gwrra-h.org

Region Couple of the Year

Steve & Carolyn Cotton
Steve 918-798-8560
Carolyn 918-798-8561
coy@gwrra-h.org

Region Chapter of the Year

Ann Nahl
405-630-8010
CHOYcor@gwrra-h.org

Region Patches

Billie Fleming
832-630-2293
med@gwrra-h.org

Region Treasurer

Ed Nahl
405-642-2698
treasurer@gwrra-h.org

Region Newsletter Editor

Jim Berry
318-348-1275
newsletter@gwrra-h.org

Region Webmaster

Sam Belinoski
281-469-5755
webmaster@gwrra-h.org

Vendor Coordinator

Ruby Seale
903-767-1022
vendor@gwrra-h.org

August 2015

Sunday	Monday	Tuesday	Wednesday	Thursday	Friday	Saturday
26 Jul	27	28 6:00pm - 8:00pm Chapter "R" Monthly Gathering Grapevine	29	30	31	1 Aug 8:30am - 11:00am Breakfast Ride to Cattleman's Cafe'
2	3	4 6:00pm - 8:00pm Chapter "G2" Monthly Gathering Greenville	5	6 6:00pm - 8:00pm Chapter "M" Monthly Gathering Mansfield	7	8 8:30am - 11:00am Mystery Ride
9	10	11	12	13	14	15
Colorado District Convention, Montrose, Colorado						
16	17	18 6:00pm - 8:00pm Chapter "G2" Monthly Gathering Wylie	19	20 6:00pm - 8:00pm Chapter "W2" Monthly Gathering Waxahachie	21	22 5:00pm - 8:00pm Bowling at Allen Bowl
23 4:00pm "G2" Ride Planning Dinner Meeting, Plano	24	25 6:00pm - 8:00pm Chapter "R" Monthly Gathering Grapevine	26	27 6:30pm - 8:00pm Chapter "G2" Monthly Gathering McKinney	28	29 8:00am - 1:00pm Ride for Natalee, Justin TX
30	31	1 6:00pm - 8:00pm Chapter "G2" Monthly Gathering Greenville	2	3	4	5
Wing Ding, Huntsville, Alabama						
6:00pm - 8:00pm Chapter "M" Monthly Gathering Mansfield						

September 2015

Sunday	Monday	Tuesday	Wednesday	Thursday	Friday	Saturday
30 Aug	31	1 Sep	2	3	4	5
		6:00pm - 8:00pm Chapter "G2" Monthly Gathering Greenville		6:00pm - 8:00pm Chapter "M" Monthly Gathering Mansfield	Wing Ding, Huntsville, Alabama	
6	7	8	9	10	11	12
		7:00pm - 8:00pm G2 Ice Cream Social, Greenville		6:30pm - 8:00pm Chapter "G2" Dinner		8:30am - 3:00pm DFW Smiles for Life Ride,DFW Honda, Grapevine
13	14	15	16	17	18	19
		6:00pm - 8:00pm Chapter "G2" Monthly Gathering Wylie		Kansas District Convention, Abilene, Kansas		
20	21	22	23	24	25	26
		6:00pm - 8:00pm Chapter "R" Monthly Gathering Grapevine		6:00pm - 8:00pm Chapter "W2" Monthly Gathering Waxahachie		5:00pm - 8:00pm Bowling at Allen Bowl
27	28	29	30	1 Oct	2	3
4:00pm "G2" Ride Planning Dinner Meeting, Plano				6:00pm - 8:00pm Chapter "M" Monthly Gathering Mansfield		8:45am - 4:00pm Chapter "R" Chicken Drop Rally - Krum, TX

October 2015

Sunday	Monday	Tuesday	Wednesday	Thursday	Friday	Saturday
27 4:00pm "G2" Ride Planning Dinner Meeting, Plano	28	29	30	1 6:30pm - 8:00pm Chapter "M" Monthly Gathering Mansfield	2	3 8:45am - 4:00pm Chapter "R" Chicken Drop Rally - Krum, TX
4	5	6 6:30pm - 8:00pm Chapter "G2" Monthly Gathering Greenville	7	8 6:30pm - 8:00pm Chapter "G2" Dinner	9	10
11 8:00am - 1:00pm DFW Ride for Kids, Texas Motor Speedway, Fort Worth	12	13	14	15	16	17
18	19	20 6:30pm - 8:00pm Chapter "G2" Monthly Gathering Wylie	21	22 6:00pm - 8:00pm Chapter "W2" Monthly Gathering Waxahachie	23	24 5:30pm - 8:00pm Bowling at Allen Bowl
25 4:00pm "G2" Ride Planning Dinner Meeting, Plano	26	27 6:30pm - 8:00pm Chapter "R" Monthly Gathering Grapevine	28	29	30	31