



January 2020

Volume I, No. 1



- Chapter G2 meets the First Tuesday of every month at Buffet Palace, 3202 IH-30, Greenville. There is a second meeting on the third Tuesday of each month at Napoli's Pizza, 701 Hwy 78, Wylie. Eat at 6:00 PM, meet at 7:00 PM.
- Unless otherwise noted, Chapter G2 Rides will depart from the Valero at 4303 Joe Ramsey Blvd, Greenville, Texas.

Inside this issue:

| | |
|-----------------------------|-----|
| Words From The Wiggins | 1 |
| About Chapter G2 | 2 |
| Rider Education | 3 |
| Coming Events | 4 |
| National and District Staff | 5 |
| Chapter Shirts | 6 |
| Calendar | 7,8 |
| Louisiana Rally Flyer | 9 |
| Missouri Rally Flyer | 11 |
| GWRRRA Trial Membership | 13 |

G2 ROADRUNNERS

“Friends for Fun, Safety, and Knowledge”

Visit the Chapter G2 Web Page at <http://www.g2txroadrunner.org>

WORDS FROM THE WIGGINS

Jim and Barbara Wiggins, Chapter Directors

Happy New Year

There was wonderful riding weather last week since the temperatures were well above average. Barb and I got to ride with my son and DIL on a couple of those days. We even got to see the “Largest Spur” on an afternoon outing to Lampasas. That’s not something that was ever on my bucket list, but it was a nice lunch ride. The spur is almost 34 feet tall. <https://www.guinness-worldrecords.com/world-records/largest-spur>.

The Christmas party at Siciliano’s replaced our normal gathering at Buffet Palace last month but we’ll have our regular gathering at the Buffet Palace in Greenville on Tuesday, 7 Jan. Dinner at 6 PM, meeting starts at 7 PM. Only four people were able to make the gathering at Napoli’s this month. Lots of traveling going on so only three could make it to the Ice Cream Social last month.

Seventeen people were able to attend the New Year’s gathering at Babe’s Chicken House. We really enjoyed reconnecting with some of our friends that we hadn’t seen in a while. Thanks to Harry for organizing the gathering again.

GWRRRA is offering a **Free** four-month trail membership. The application form is enclosed with this newsletter. Please let any prospective members know of this offer.

The TX District Mid-Winter Roundup will be on Saturday, January 25th at the Y.O Ranch in Kerrville. The roundup is primarily for doing district/chapter business, but all are invited to attend.

Chapter P (Granbury) is going to host their annual North Texas Bowling Challenge on Sunday, March 1, 2020. This is a fun event and they do a great job hosting it. The details are still in work but make sure to mark it on your calendar.

The next Texas District Rally will be in Kerrville at the Y.O. Ranch Hotel and Convention Center from 30 April to 2 May 2020. The latest info is available at <http://www.gwrra-tx.org-/2019In-fo/2020RallyPage.php>. You can make reservations by clicking on the YO Ranch logo. This is a great area to ride.

Wing Ding 42 will be in Springfield MO. June 30 – July 4, 2020 at the Spring-

field Expo Center in Springfield, Missouri. You can register for the event “early bird” packages and for notifications when updates occur at the following site <http://42.wing-ding.org/>.

George has investigated hotels in the area. Contact George for more info if interested.

The Missouri District Rally will be at the Angel Inn in Branson, MO May 28 – 30. See the flyer later in this edition. I’ll be forwarding an email to our distribution list that details their plans. Let me know if you need more information on this rally and I’ll make sure you get it.

Get involved with the chapter! It’s fulfilling and FUN.

Please email or call if you have an activity or ride you’d like to plan and we’ll try to get it set up.

Jim & Barbara Wiggins
jimwtx@verizon.net
 (903) 217-4066
barbwtx@verizon.net
 (903) 456-0203
 Chapter Directors,
 Texas Chapter G2 ☺

**GWRRA
TEXAS DISTRICT
CHAPTER G2
GREENVILLE, TX**

GWRRA MISSION

Dedicated to our Motto;
Friends for Fun, Safety and
Knowledge, GWRRA
Members enjoy the freedom
of belonging to a not-for-
profit, non-religious and non-
political organization.

GWRRA VISION

Gold Wing Road Riders
Association [GWRRA],
founded in 1977, is
recognized as the world's
largest single-marquee
motorcycle association in the
world. GWRRA provides
safety, technical, and
educational services to its
Members world-wide.

CHAPTER STAFF

Chapter Directors



Jim & Barbara Wiggins
jimwtx@verizon.net

Assistant Directors

Position available

Treasurer and
Newsletter Editor *pro tem*



George Augustas
Gsaugustas@att.net

**G2 ROADRUNNERS
FIND US:**

WEBSITE:
<http://www.g2roadrunner.org>

FACEBOOK:
GWRRA-ChapterTX-G2
Chapter G2 Meetings:

On the first Tuesday of the month, G2
meets to discuss Chapter, GWRRA
and ride information at The Buffet Pal-
ace (3202 I-30, Greenville, TX 75402)
This has been the main chapter meeting
historically. Dinner at 6:00pm, meeting
starts at 7:00.

On the Third Tuesday of the month,
folks closer to the metroplex have an
opportunity to gather together at Na-
poli's Restaurant in Wylie. (701 N Hwy
78, Wylie, TX 75098) - (972) 442-4653.
This is for passing information shared
at the Greenville meeting and to enjoy
the company of others we get to see
less frequently. Gathering starts at 6:00
pm.

Local Area Chapter Gatherings

| Chapter | Location | Meeting Time | Meeting Location | Meeting Day |
|------------|-------------------------|---------------------------------|---|--------------|
| Chapter G2 | Greenville | 6:00 PM (Eat) 7:00 PM (Meet) | Buffet Palace 3202 IH-30, Greenville | 1st Tuesday |
| Chapter G2 | Wylie | 6:00 PM (Eat) 7:00 PM (Meet) | Napoli's Italian Restaurant 701 Hwy 78, Wylie, Texas | 3rd Tuesday |
| Chapter M | Arlington/ Mansfield | 6:00 PM (Eat) 7:00 PM (Meet) | Spring Creek Barbecue 1724 Hwy 287 at Debbie Lane, Mansfield | 1st Thursday |
| Chapter P | Granbury | 6:30 PM (Eat) 7:00 PM (Meet) | Spring Creek Barbecue 317 Hwy 377 E (at Overstreet), Granbury | 2nd Thursday |
| Chapter R | D-FW | 6:00 PM (Eat) 7:00 PM (Meet) | Spring Creek Barbecue 315 West SH-114, Grapevine, Texas | 4th Thursday |
| Chapter W2 | Waxahachie | 6:00 PM (Eat) 7:00 PM (Meet) | Cancun's Ameri-Mex Restaurant 2000 Corporate Parkway, Waxahachie | 3rd Thursday |

Rider Education

David Whitford

Hearing Protection

News Flash: Riding motorcycles can damage your hearing. Did you read that correctly? Riding motorcycles can damage your hearing! If you ride long enough without hearing protection you will suffer hearing damage. And you know what? Hearing damage is irreparable—it doesn't heal; once damaged it won't get better. Here's the final bit of bad news: hearing damage is cumulative! That's right, it builds upon itself, just getting worse and worse!

There is good news however. With proper and careful choice of gear, regular hearing check-ups and a good set of earplugs you can protect yourself against hearing damage.

To understand the various types of hearing loss, you must first know how your hearing system works. Sound Waves pass through the auditory canal (1) and beat against the eardrum (2), causing vibrations in the chain of three small bones in the middle ear (3). The third bone, called the stapes or stirrup, is the smallest bone in the human body. It fits into an area called the oval window, located between the middle ear and the inner ear (4). When the stapes vibrates with the sound waves passing through, fluid in the inner ear carries the vibrations into the canal of a delicate, spiral structure called the cochlea (5).

Thousands of hair cells in one part of the cochlea are connected to fibers that make up the auditory nerve. Each hair cell has many microscopic hairs at one end. Movements of the fluid, with the aid of an overlying membrane, bend

the tiny hairs. Movement of the hairs stimulates the hair cells to generate electrical impulses, which are carried up the auditory nerve to the brain.

So, with all that said, what does it mean? Well for every sound, chirp, wind noise, bleep, beep, honk, or other type of sound the ear hears the brain **MUST** process each one. With proper hearing protection we can reduce the amount of sounds the brain must process and in turn reduce the stress and exhaustion that is possible from excessive sound overload. Every wonder why you are so mentally tired after a day long ride or even a half day ride? I learned to wear hearing protection early in my riding career. I've ridden with and without hearing protection and every time I ride without it I'm left wishing I had worn them. I've even stopped to put my hearing protection in. Now, it is just much easier for me to begin my rides with hearing protection in place. I'd be lying if I said I wear it 100% of the time but I will say 95% of the time you will see me wearing my hearing protection.

Noise-Induced Hearing Loss: Causes no pain, Causes no visible trauma, Leaves no visible scars, Is unnoticeable in its earliest stages, Accumulates with each over-exposure, Takes years to diagnose, Is permanent, and 100% preventable.

Disposable Ear Plugs

Ever wonder why the goldfish bowl full of orange earplugs (at \$1 a pair) at your local dealer is perpetually empty? The reason is because the majority of riders use disposable ear plugs! They offer excellent protection at a palatable price. Is this then the way to go? Well, No, not really.

Ear canals are very much like fingerprints in that no two are alike. Fortunately disposable ear plug manufacturers offer "variety packs" with two or three pairs of every disposable plug they offer. For under \$5 or so you will be able to test all of them and see which work best for your ears (after all if they aren't comfortable you won't wear them, right?) I'm a huge proponent of COMFORTABLE gear!!

There are basically four types of disposable earplugs for folks who wear

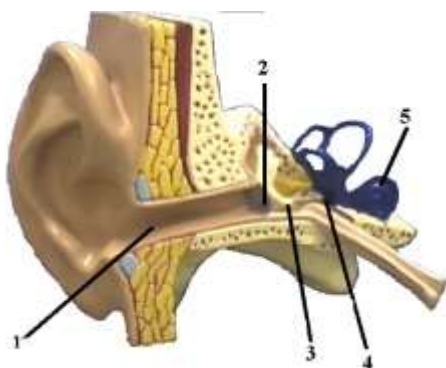
full-face helmets, the large "Max", the thinner "Lite", the "Hearos" type which has a stiff center aiding insertion, and the "Drum" type popular in the shooting department of sporting goods stores.

They are inserted by rolling the plug between two fingers, inserting up to the "bud", then holding until the foam has fully expanded. A properly sized and inserted plug will be comfortable for a full day of riding and almost completely eliminate the "jet engine" wind roar while at the same time allowing you to hear important things like horns and folks talking. As the plug expands in the ear after insertion you will be able to hear as the background noise suddenly disappears. Clap your hands; if you can hear anything other than a dull, muffled clap your earplugs are either improperly inserted, incorrectly sized, or need to be replaced.

Earplugs must be regularly replaced. As you wear them they become saturated with moisture, ear wax, and bacteria. Not only are used plugs unhygienic, they lose their ability to protect your ears. Many riders wash plugs and re-use them, I've always found it easier to buy in bulk and at about \$0.15 cents a pair, just use a new pair every time or at least every other time.

A "too big" plug will be very uncomfortable and the protection will be handicapped because the foam has not had the room to expand and conform into the ear canal. A "too small" plug will be comfortable but may be loose in the ear, and again, the protection will be handicapped because the fully expanded foam will not have sufficiently filled in and conformed to the ear canal. *(Continued next page)*

Disposable plugs offer superior protection at an excellent price. The low cost of bulk buying ensures you will always have a clean, fresh pair (and the inevitable pair for your riding buddy who either forgot his or is (re) using a 3-month old ratty pair from Wal-Mart.) Conney Safety Products at <http://www.conney.com> has every type of hearing protection you could ever want or need. Order or call and ask for the Howard Leight Variety Pack. Try



all the plugs to see which fit you best, then call and order a box (200 pairs, ~\$30.) Stuff them in your riding suit, your tank bag, and keep ten or so spare pairs in your trunk. After a month or so you'll wonder how you could ever re-use a pair :)

Custom Ear Plugs are a great option but they can be expensive. I choose to use disposable ear plugs because they are easy and cheap, and not only do I not fear misplacing one, I can wear a new pair every time if I choose. The advantages are excellent hearing protection and long term comfort and proven fit. The disadvantages include the possibility of loss or breakage leaving you with no protection, cost,

and having to go through having them made.

Summary

Hearing loss is preventable. If you ride for any length of time without ear protection you will suffer irreversible hearing damage. Whether high quality disposable ear plugs or custom-made and fitted ear plugs, consistently wearing a high quality ear plug *every time* you ride will ensure you won't have to go through life constantly asking people to repeat themselves, or wondering if that screeching ringing in your ears will ever go away.

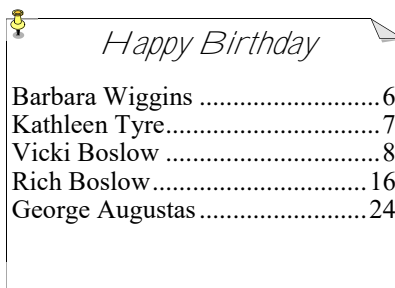
Until next time, see you on the road. ☺

This article was reprinted from the August 2009 issue of *The Touring B News* —Ed.

Coming Events

| Date | Chapter | Event | Location | Contact/E-Mail | Phone |
|-------------------|---------|--------------------------------------|--|---|--------------|
| January 7, 2020 | G2 | First Tuesday Gathering | Buffet Palace Greenville, Texas | Jim Wiggins jimwtx@verizon.net | |
| January 21, 2020 | G2 | Third Tuesday Gathering | Napoli's Italian Restaurant Wylie, Texas | Jim Wiggins jimwtx@verizon.net | |
| January 25, 2020 | * | Mid-Winter Roundup Texas District | Y.O. Ranch Kerrville, Texas | Jim Woodul txdd@gwrra-tx.org | 254-634-4658 |
| February 4, 2020 | G2 | First Tuesday Gathering | Buffet Palace Greenville, Texas | Jim Wiggins jimwtx@verizon.net | |
| February 18, 2020 | G2 | Third Tuesday Gathering | Napoli's Italian Restaurant Wylie, Texas | Jim Wiggins jimwtx@verizon.net | |
| March 1, 2020 | P | North Texas Bowling Challenge | Citiview Lanes 6601 Oakmont Blvd, Ft Worth | Gary Wheatley gary@c21granbury.com | 713-859-6589 |
| April 30-May 2 | * | Texas District Rally | Y.O. Ranch Kerrville, Texas | Jim Woodul txdd@gwrra-tx.org | 254-634-4658 |
| June 30-July 4 | * | Wing Ding 42 | Springfield Expo Center Springfield, Missouri | GWRRRA National Office | 800-843-9460 |

This information is provided for the convenience of Chapter G2 members. Information is obtained from the Texas District web page and other sources. No warranty is made with respect to the accuracy of any information on this page, the calendar pages, or any other page in this newsletter, and the staff of Chapter G2 shall not be held liable if any information is incorrect. You are advised to verify the accuracy of this information prior to attending any listed event. This information is subject to change without notice. Rev. 05 January 2020.



TEAM GWRRA

NATIONAL OFFICERS

| | | | |
|---|----------------------------|-----------------|---------------------------|
| President and Wingman | Anita and JR Alkire | 623-445-2680 | aalkirer@gwrro.org |
| Director of Rider Education | Tim and Anna Grimes | 301-994-1394 | tgrimes@gwrro.org |
| Director of Membership Enhancement | Larry and Penny Anthony | 205-492-9728 | mepgwrro@gmail.com |
| Director of GWRRA University | Clara and Fred Boldt | 641-484-5140 | toledotriker@gmail.com |
| Director of Finance | Randall and Janet Drake | 303-933-6073 | financedirector@gwrro.org |
| Director of Motorist Awareness | Mike and Barri Critzman | 760-486-3405 | itsawingthing@hotmail.com |
| Executive Director Overseas | Dan and Rachel Sanderovich | 942-542-300-311 | dan.sanderovich@gmail.com |

TEXAS DISTRICT OFFICERS

| | | | |
|--|---------------------------|--------------|------------------------------|
| District Directors | Jim and Alvalin Woodul | 254-634-4658 | txdd@gwrro-tx.org |
| Assistant District Director | Dan and Donna Rymarz | 847-702-6667 | txadd@gwrro-tx.org |
| Assistant District Director | Tom and Dawn Sprague | 858-755-6071 | txadd2@gwrro-tx.org |
| District Treasurer | Tim and Young Brooks | 254-290-5462 | txtreasurer@gwrro-tx.org |
| Administrative Assistant | Wanda Osborn | 512-528-8105 | txadmin@gwrro-tx.org |
| District Educators | (open) | | |
| Assistant District Educator Medic First Aid Coordinator | Chris and Lynn Schoenthal | 972-660-6286 | txeda@gwrro-tx.org |
| Membership Enhancement Coordinator | Lyle and Sheri Altes | 512-897-0860 | txmcc@gwrro-tx.org |
| District Training Coordinator | (open) | | txtrainer@gwrro-tx.org |
| Assistant Trainer | Jim Scholes | 832-627-8423 | txtrainer2@gwrro-tx.org |
| COY Coordinator | Dale and Carleen Garrett | 254-554-4123 | coycoordinators@gwrro-tx.org |
| Couple of the Year 2017-2018 | Tom and Dawn Sprague | 858-755-6071 | txcoy@gwrro-tx.org |
| Motor Awareness Coordinator | Lynn and Cindy Harris | 386-527-4416 | txma@gwrro-tx.org |
| Ride Coordinator | Butch and Marie Schmit | 817-573-7763 | txrides@gwrro-tx.org |
| Vendor Coordinators | Dawn Sprague | 858-755-6071 | txvc@gwrro-tx.org |
| Webmaster | Tom Sprague | 858-755-6071 | webmaster@gwrro-tx.org |
| Newsletter Editor | Tom Sprague | 858-755-6071 | nle@gwrro-tx.org |
| | | | |
| | | | |

SHIRT AND HAT SALE

The Chapter has some hats and shirts available. Designs vary a little since they were ordered at different times, but most are a variant of the front and back shown in the picture. The back is the large logo while the front has the G2 designator on the left breast. Let me know if you're interested and I'll bring to a gathering or arrange some other so you can see them or take more detailed pictures.

Jim Wiggins– contact info in the staff section.

| Item | Size | Qty | Price |
|-------------------------|------|-----|---------|
| Blue Long Sleeve Tee | M | 3 | \$15.00 |
| | L | 8 | \$15.00 |
| | XL | 3 | \$15.00 |
| Blue Short Sleeve Tee | M | 1 | \$15.00 |
| | L | 1 | \$15.00 |
| | 2X | 1 | \$15.00 |
| Blue Polo Shirt | M | 1 | \$30.00 |
| Embroidered hats | | 3 | \$15.00 |
| Yellow Short Sleeve Tee | M | 1 | \$12.00 |
| Yellow Windbreaker | M | 1 | \$12.00 |



A Face In The Clay

It looks disconcertingly like a face from above, but this formation in Alberta, Canada is entirely natural. Dubbed the Badlands Guardian, the “face” is actually a valley eroded into the clay. Some say the man looks like he’s wearing earphones; that’s merely a road and an oil well. Even the Badlands Guardian, it seems, isn’t immune to exploratory drilling.

Source: “Ten Google Earth Mysteries” (*Time/CNN*)



JANUARY 2020

SUNDAY MONDAY TUESDAY WEDNESDAY THURSDAY FRIDAY SATURDAY

| SUNDAY | MONDAY | TUESDAY | WEDNESDAY | THURSDAY | FRIDAY | SATURDAY |
|--|---|---|-----------|--|----------------------------|---|
|  <p><i>January Observances</i> National Blood Donor Month National Braille Literacy Month National Hobby Month National Mentoring Month National Oatmeal Month National Slow Cooking Month National Soup Month</p> | | | 1 | 2 | 3 | 4 |
| 5 National Bird Day | 6 | 7 Chapter G2 Gathering Buffet Palace Greenville | 8 | 9 Law Enforcement Appreciation Day | 10 ☉ Full Moon | 11 |
| 12 | 13 Clean Off Your Desk Day | 14 | 15 | 16 | 17 ☾ Last Quarter | 18 |
| 19 | 20 Martin Luther King Birthday (observed) | 21 Chapter G2 Gathering Napoli's Pizza Wylie, Texas | 22 | 23 National Pie Day | 24 ● New Moon | 25 Texas District Mid-Winter Roundup Y.O. Ranch Kerrville, Texas |
| 26 | 27 | 28 | 29 | 30 | 31 National Bookend Day | |

FEBRUARY 2020

SUNDAY MONDAY TUESDAY WEDNESDAY THURSDAY FRIDAY SATURDAY

| SUNDAY | MONDAY | TUESDAY | WEDNESDAY | THURSDAY | FRIDAY | SATURDAY |
|--|-----------------------|---|--------------------------|----------|-----------------------|--------------------------------|
|  <p><i>February Observances</i> Black History month American Heart month Children's Dental Health month Friendship month National Youth Leadership month Library Lovers month: If you don't have a library card, get one and read</p> | | | | | | ☽ First Quarter 1 |
| 2 Groundhog Day | 3 | 4 Chapter G2 Gathering Buffet Palace Greenville | 5 | 6 | 7 Wear Red Day | 8 |
| ☺ Full Moon 9 | 10 | 11 Make A Friend Day | 12 Lincoln's Birthday | 13 | 14 Valentine's Day | ☾ Last Quarter 15 |
| 16 | 17 President's Day | 18 Chapter G2 Gathering Napoli's Pizza Wylie, Texas | 19 | 20 | 21 | 22 Washington's Birthday |
| ● New Moon 23 | 24 | 25 | 26 | 27 | 28 | 29 Leap Year Day |

Grand Prize
2
\$500
Daily
50/25/25

MARDI GRAS

M
A
D
N
E
S
S

R
A
L
L
Y
&
R
I
D
E
S

RIDES

Visit A
Gator Farm

RIDES

Tour A
Plantation Home

March 26, 27 & 28

Come Early 3/25 Stay Late 3/29
For Our SPECIAL Guided Tours



Courtyard Marriott
142 Library Dr



Houma, Louisiana 70360

985-223-8996 ask for GWRRA Rate

Special Rate of \$99 a night w/Breakfast
If Booked Through The Host Hotel Only

Mardi Gras
Costume Ball with
Costume Contest

Cookie Bar
Contest Open
to ALL

Day Ride To
New Orleans



Cooking With
Pam J

RIDES

Steak or Fish
Night

COY Selection

RIDES

Shirt Contest

Laissez les Bon Temps Rouler!

For more Info:
Website gwrra-la.org - Email dd@gwrra-la.org - Facebook: GWRRA Louisiana - Groupworks: LA District

Louisiana District Mardi Gras Madness Rally

March 26th, 27th & 28th

Come Early 3/25 Stay Late 3/29

For Our SPECIAL Guided Tours

gwrra-la.org and click on the Rally tab

Early Registration ENDS 3/1/2020

PLEASE PRINT

Rider's Name _____ GWRRR# _____
 Co-Rider's Name _____ GWRRR# _____
 District / Chapter _____
 Address _____
 City _____
 State _____ Zip _____ Phone (____) _____ - _____
 Rider Email _____
 Co-Rider Email _____

| QTY | DESCRIPTION | Price | Total |
|--|--|------------------|--------------|
| | GWRRR Member Early Registration \$30, \$35 on site | \$30 | |
| | GWRRR One Day Pass | \$20 | |
| | GWRRR Life Member | \$20 | |
| | Non-Member Early Registration \$35 \$40 On Site | \$35 | |
| | Sat 50/25/25 Tickets/Stretch (10 Double Tickets) Must Be Present To Win | \$10/ea | |
| | Grand Prize Tickets/Stretch (10 Double Tickets) Must Be Present To Win | \$10/ea | |
| | Steak or Fried Fish Night: Sides and a Drink <small>Circle Steak or Fish</small> <small>SATURDAY AFTER CLOSING Must Be Paid By March 1st Steak: R, M, W</small> | \$15 | |
| | Level IV Lunch (Time TBD) Level IV # _____ Level IV # _____ | \$10/ea | |
| | Professional Motorcycle Escort Tour | \$10/ Vehicle | |
| Refunds subject to 10% Service Charge & NO REFUNDS after Mar 15, 2020 | | | TOTAL |

I/we agree to hold harmless the GWRRR, co-sponsoring organization, and any property owners for any loss or injury to self or property to which I/we may become involved by reason of participation in this Rally.

Rider Signature _____ Date _____

Co-Rider Signature _____ Date _____

Make Checks or Money Orders Payable to: Louisiana District
 Mail to: Fritz & Johnette Beter, J.A.D/D, 3257 E. Lafourche Ct Kenner, La 70065

Missouri District Rally

**at Angel Inn
May 29th to May 30, 2020
Branson, Missouri**

'Wingin the Ozarks'

Bob & Jan Wills, District Directors
Jan's cell (720) 351-6663 Bob's cell (720)333-0153
moddirector2022@gmail.com



Photo by: Noraleen Hord Wingin the Ozarks

Host Hotels:

| Southern Oaks Inn | Angel Inn | Econo Lodge |
|---|--|--|
| 3395 Shepherd Hills Exp. (417) 335-8108 \$61.99/night + tax Pet friendly \$25/1X Fee | 3311 Shepherd Hills Exp. (417) 334-2300 \$62.99/night + tax No Pets | 3269 Shepherd Hills Exp. (417) 335-6776 \$59.99/night + tax Pet friendly - \$10/night |

Campers: Willow Tree RV Park, 3381 Shepherd Hills Exp., (417) 334-8890

All Pre-Registration forms must be post marked by: April 30, 2020.
NO REFUNDS after May 15, 2020.

Full registration includes: Free lunches and 3 dinner vouchers valued at \$32.00.

1st 400 registrations receive a free rally pin.

Registrants before 4-30-2020 receive DUB card for \$250.00 drawing. Huge 50/50 drawings daily, give-away tickets to shows, gift baskets and much more!



Registration Form – Please print clearly

Rider: _____ State: _____ Chapter: _____ GWRRA # _____ Exp.Date: _____
 Address: _____ City: _____ State: _____ Zip: _____
 Phone #s: (H) _____ (C) _____ Email: _____

Co-Rider: _____ State: _____ Chapter: _____ GWRRA # _____ Exp.Date: _____
 Address: _____ City: _____ State: _____ Zip: _____
 Phone #s: (H) _____ (C) _____ Email: _____

Please complete the items you want:

| | | | | | | |
|---|------|---|-------|---|----|-------|
| GWRRA Member Registration | \$35 | X | _____ | = | \$ | _____ |
| GWRRA Member Registration after 4/30/20 | \$40 | X | _____ | = | \$ | _____ |
| Non-Member Registration | \$40 | X | _____ | = | \$ | _____ |
| Non-Member Registration after 4/30/2020 | \$45 | X | _____ | = | \$ | _____ |
| 15 & under (w/paying adult) | \$20 | X | _____ | = | \$ | _____ |
| District Director, COY, IOY | \$20 | X | _____ | = | \$ | _____ |
| MFA Course | \$20 | X | _____ | = | \$ | _____ |

| | | | | | | | | |
|---|----|---|---|----|--------|---|----|-------|
| | S | M | L | XL | \$13 X | = | \$ | _____ |
| Rally T-shirts | 2X | | | | \$14 X | = | \$ | _____ |
| <i>(Short sleeve, Gildan Ultra, Safety Green color, large logo on back, small logo on front, crew neck)</i> | 3X | | | | \$15 X | = | \$ | _____ |
| | 4X | | | | \$16 X | = | \$ | _____ |

TOTAL (enclosed): \$ _____

Make checks payable to 'Missouri GWRRA' and send to: Carol White, 605 Della Street Versailles, MO 65084

Email: mrnash23@sbcglobal.net

Liability Release (ALL registrants must sign) I agree to hold harmless GWRRA, the co-sponsoring organization, and any property owners for any loss, injury to self/property by any reason by participating in this rally.

Rider signature: _____ Date: _____
 Co-rider signature: _____ Date: _____



FOR MORE INFO ON BENEFITS, VISIT **GWRRA.ORG**

GOLD WING ROAD RIDERS ASSOCIATION

TRIAL MEMBERSHIP

4 *Free* Months



You will receive:

- Rescue Motorcycle Towing of 35 miles
- 4 months subscription to *Wing World* magazine
- Opportunity to participate in Chapter Life

Yes! I would like a 4 month free trial membership to GWRRA

Name: _____ Corider: _____

Address: _____
(Street Address)

City: _____ State _____ Zip Code _____

Phone: (_____) - _____
(Area Code)

Email: _____

Referred By: _____ Member Number: _____

Mail to GWRRA-PO Box 42450, Phoenix, AZ 85080-9942

GWRRA Chapter G2 Newsletter
c/o George S. Augustas
2514 Cedar Elm Lane
Garland, TX 75043-5916

To:

